

**Products**

- [Knobs](#)
- [Handles](#)
- [Instrument Cases & Covers](#)
- [Handwheels](#)
- [Two Shot / Soft Touch](#)

## Pointer Control Knobs

Davies offers an extremely broad range of pointer knobs. From crisp lines to soft contours, you are sure to find a pointer control knob to suit your needs. Several of our pointer knobs include an indicator line.

- Varieties available in both thermoplastic and phenolic materials.
- Sizes ranging from 3/4" to 2-1/2" in diameter.
- Female insert, plain molded hole and spring mounting options are available. Please see the chart below for a complete list of our capabilities for each part number.
- Knobs can be [decorated or customized](#) to your specific need.
- Can't find what you're looking for? [Contact us](#) today to learn about our [custom molding options](#).



0110/0112/0115



1210



1214



1216



1400



1470



1500/1520



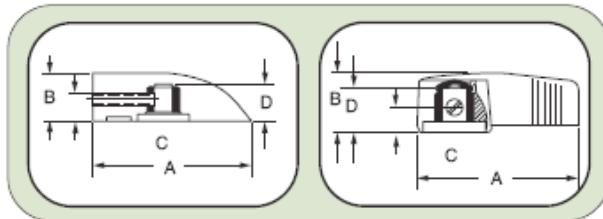
1510



1550



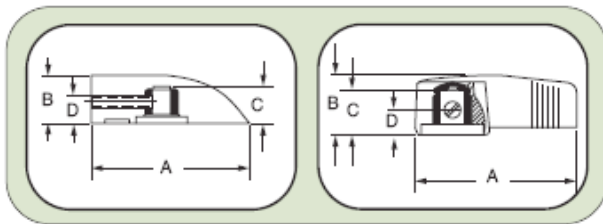
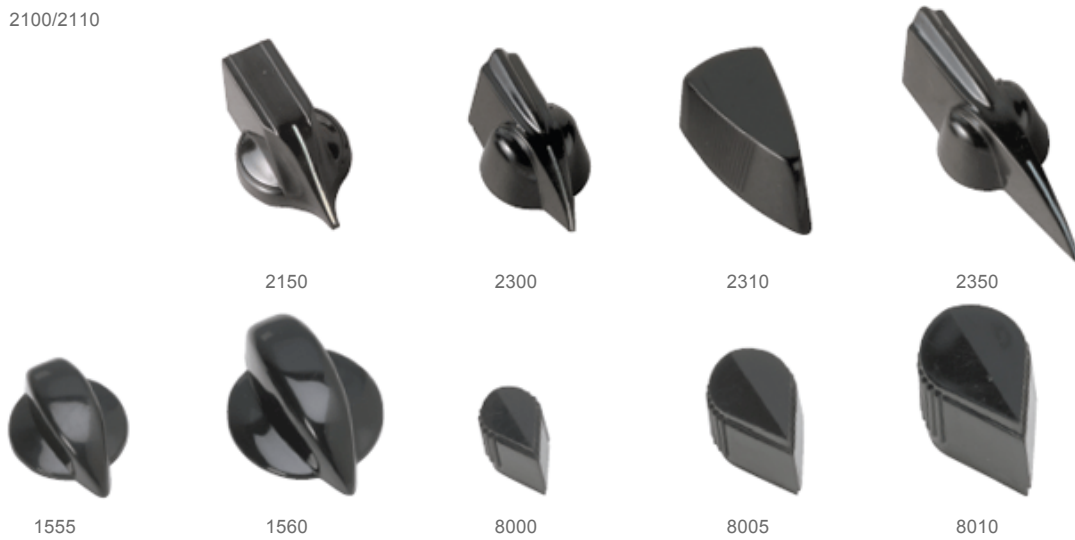
1919



Material Type	Part No.	A	B	C	D	Plain Molded Hole			Female Insert			Spring Mounting
						1/8	3/16	1/4	1/8	3/16	1/4	1/4 Flattened to 5/32
TS	0110	2 3/16	25/32	-	-	▲	▲	▲	▲	▲	■	▲
TS	0112	1 3/4	5/8	-	1	▲	▲	▲	▲	▲	■	▲
TS	0115	1 1/4	9/16	-	5/8	▲	▲	▲	▲	▲	■	▲
TS	1210	1 1/32	5/8	21/32	17/32	■	■	■	■	■	■	■
TS	1214	1 21/32	5/8	21/32	17/32	■	■	■	■	■	■	■
TS	1216	1 9/32	5/8	21/32	17/32	■	■	■	■	■	■	■
TS	1400	27/32	13/32	11/32	-	■	■	■	■	▲	■	■
TS	1470	1 1/8	1/2	7/16	11/16	▲	■	■	■	■	■	■
TS	1500	1 1/8	9/16	1/2	11/16	■	■	■	▲			▲
TS	1510	3/4	9/16	13/32	9/16	■	■	■	▲			▲
TS	1520	1 1/2	3/4	5/8	13/16	▲	▲	■	▲	▲	■	■
TS	1550	1 1/8	5/8	7/16	11/16	■	▲	■	▲	▲	■	■
TS	1919	1 1/4	5/8	-	1/2	▲	▲	■	▲	▲	■	▲

\* For parts with male studs. LENGTH projecting below knob must be specified.  
 ■ Currently Manufacture/Tooled  
 ▲ Could Manufacture/Requires Tooling  
 TS Thermoset

2100/2110



Material Type	Part No.	A	B	C	D	Plain Molded Hole			Female Insert			Spring Mounting
						1/8	3/16	1/4	1/8	3/16	1/4	1/4 Flatted to 5/32
TS	2100	2 1/2	5/8	7/16	5/8	▲	▲	▲	▲	▲	■	▲
TS	2110	1 5/8	39/64	7/16	5/8	▲	▲	■	▲	▲	■	▲
TS	2150	1 1/4	9/16	1/2	5/8	▲	▲	■	▲	▲	■	▲
TS	2300	1 7/32	5/8	1/2	21/32	▲	▲	■	▲	▲	■	▲
TS	2310	1 3/16	1/2	7/16	-	■	▲	■	▲	▲	■	▲
TS	2350	2	5/8	15/32	21/32	▲	▲	■	▲	▲	■	▲
TP	1555	1 19/64	1/2	15/64	35/64	▲	▲	▲	▲			■
TP	1560	1 3/4	21/64	35/64	5/8	▲	▲	▲	▲	▲		■
TP	8000	3/4	21/32	15/32	3/8	▲	▲	▲	■	▲		▲
TP	8005	1 3/64	25/32	21/32	9/16	▲	▲	▲	▲	▲	■	▲
TP	8010	1 3/8	1	7/8	11/16	▲	▲	▲	▲	▲	■	▲

\* For parts with male studs, LENGTH projecting below knob must be specified.  
 ■ Currently Manufacture/Tooled  
 ▲ Could Manufacture/Requires Tooling  
 TS Thermoset  
 TP Thermoplastic